

TEETHING

Everything You Need to Know

Timeline



4-6 months

Your baby's teeth are almost ready to emerge. Swollen gums are common as teeth begin to push through.

6-10 months



The first teeth to arrive (lower central incisors) are typically the most painful.



9-16 months

The lateral incisors mark the end of painful teething. A full set of teeth should arrive by age 3.

8-12 months

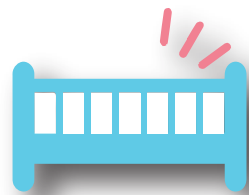


The 2 upper central incisors appear next.



Symptoms Spelled Out

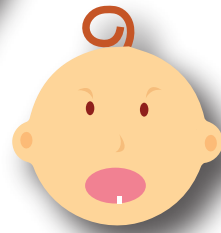
TROUBLE SLEEPING



EAR RUBBING



EXCESSIVE BITING



TENDER GUMS



HEAVY DROOLING



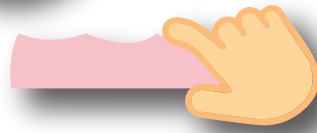
IRRITABILITY



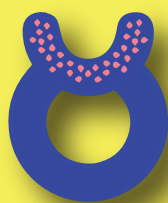
NO APPETITE



GUM RUBBING



Soothers



REFRIGERATE ANY OF THE FOLLOWING:



SOURCES

<http://oralhealth.deltadental.com/Search/22,Delta100>
<http://oralhealth.deltadental.com/Search/22,DD204>

<http://oralhealth.deltadental.com/Search/22,DD51>
<http://www.mouthhealthy.org/en/az-topics/t/teething>